

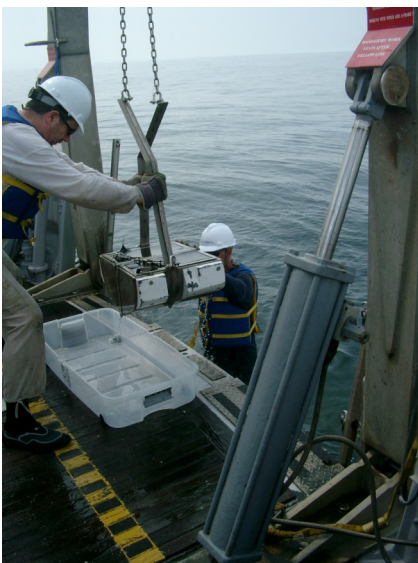
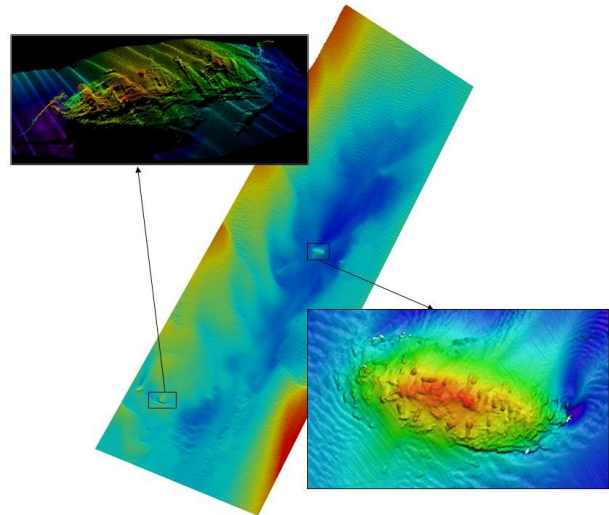
Marine Renewables



SOI Ltd is a wholly owned subsidiary of the University of St Andrews and is overseen by an independent Board of Directors. SOI Ltd employs a core of key staff to provide commercial, administrative and scientific support and advice to clients and partners. SOI Ltd provides access to expertise and staff at the Scottish Oceans Institute at the University of St Andrews, including the Conservation Ecology and Sediment Ecology Research Groups and the Centre for Research into Ecological and Environmental Monitoring. These facilities have an international reputation for the work they carry out in the UK and beyond.



SOI Ltd is closely involved in meeting the increasing demands for the sound assessment of a proposed marine renewable sites from a range of environmental perspectives. The services offered by SOI Ltd include high resolution sub-surface scanning, ecological survey and monitoring and core sample analysis enables a suit of relevant information to be gathered and interpreted to inform decision makers.



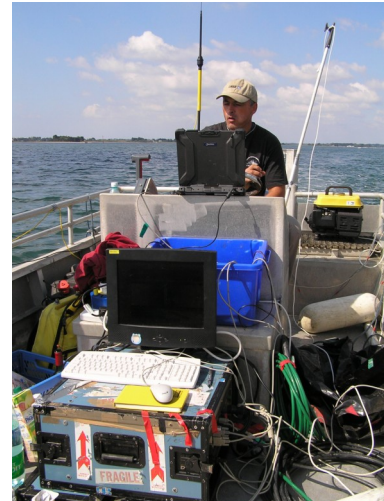
A wide range of integrated approaches are available from SOI Ltd that encompass state of the art survey technologies and more traditional sampling techniques such as grab sampling and ship-based bird surveys. We are therefore able to apply the most appropriate of a range methods that best suits our clients' needs .

Marine Renewables



Services include:

- Environmental survey (benthic ecology, ornithological, geophysical & archaeological)
- Provision of data for and interpretation appropriate for a range of EIA activities.
- High resolution sub-sea scanning
- Geochemical analysis
- Data analysis and interpretation
- Independent review and assessment for QA
- Project Management



The services offered by SOI Ltd should be seen as a vital step in securing the permissions required and demonstrating Corporate Responsibility in the development of the renewable energy sector.

SOI Ltd staff have gained extensive experience of the requirements of Natura 2000 designations under the EU Birds and Habitats Directives. This experience includes producing survey and monitoring methods to inform Appropriate Assessments and assessing Environmental Statements and Appropriate Assessments completed by third parties.

